

TECHNICAL SPECIFICATIONS

- Horizontal tank for liquid natural gas (LNG) storage. all connections and shut-off valves are placed on the side of the tank allowing to maximize the tank length thus obtaining the best overall dimensions / storage capacity ratio.
- Integrated heat exchanger
- Universal filling receptacles
- Different configurations: from single unit right or left according to customer requirements, up to a double tank system guaranteeing a driving range of more than **1500 kilometres**.
- Electronic level indicator with 8 bright LEDs.**
- Super insulation system with high vacuum which provides a low rate of evaporation.
- Maximum performance in terms of reduced evaporation rate (NER), tank reliability and durability.
- Automatic fuel excess flow valve according to R110 regulation.
- Filling connections with protective cover.
- Equipped with 2 relief valves.
- Level gauge with 0-5 VDC signal output.

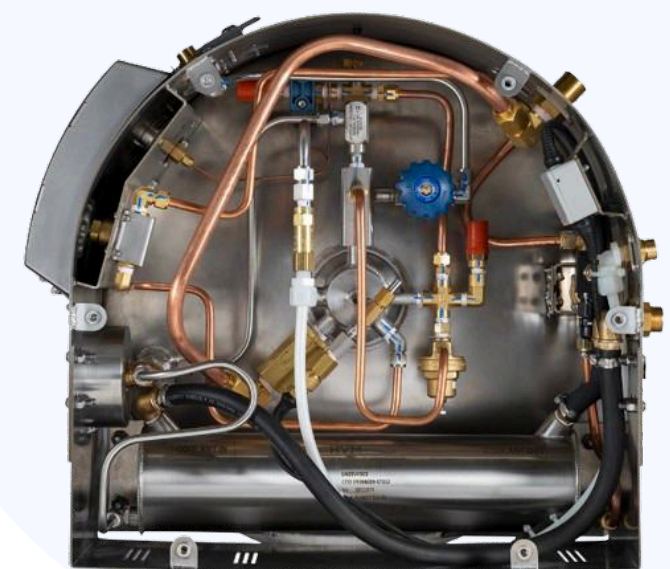
STANDARD ACCESSORIES

- Support bracket for tank installation on vehicles according to R110 regulation.
- External piping connections for system assembly on vehicles.

OPTIONAL ACCESSORIES

- Pressure Building System.
- Proximity sensor which stops the engine to ensure safe and rapid filling.
- Equipped with a fast-defueling system.
- Equipped with an optional additional safety valve

CHEETAH



CUSTOMIZATION

- Our cryogenic tanks can have different capacities and can be customized according to a customer's specific requirement.
- The system can also be used with a 12v power supply, please specify when placing your order.
- The frontal grill can be customized according to customer's requirements.

Technical Specifications

Diameter	Working Pressure	Max Dimensions	VS1 Calibration	VS2 Calibration	Additional VS
660 mm	8 - 10 Bar	660 X 706 X L mm	16 Bar	21 Bar	24 Bar

Model	Capacity					
CHEETAH	220	300	350	450	570	600
Max Working Pressure (Bar)	16	16	16	16	16	16
Overall Length (mm)	1165	1425	1590	1920	2309	2409
Empty Weight (Kg)	255	255	255	280	324	334
Weight When Full (Kg)*	297	372	370	427	510	530
Hold Time According To R110 (Days)	≥5	≥5	≥5	≥5	≥5	≥5
Geometric Capacity (L)	220	300	350	450	570	600
Net Capacity (L)	198	270	315	405	513	540

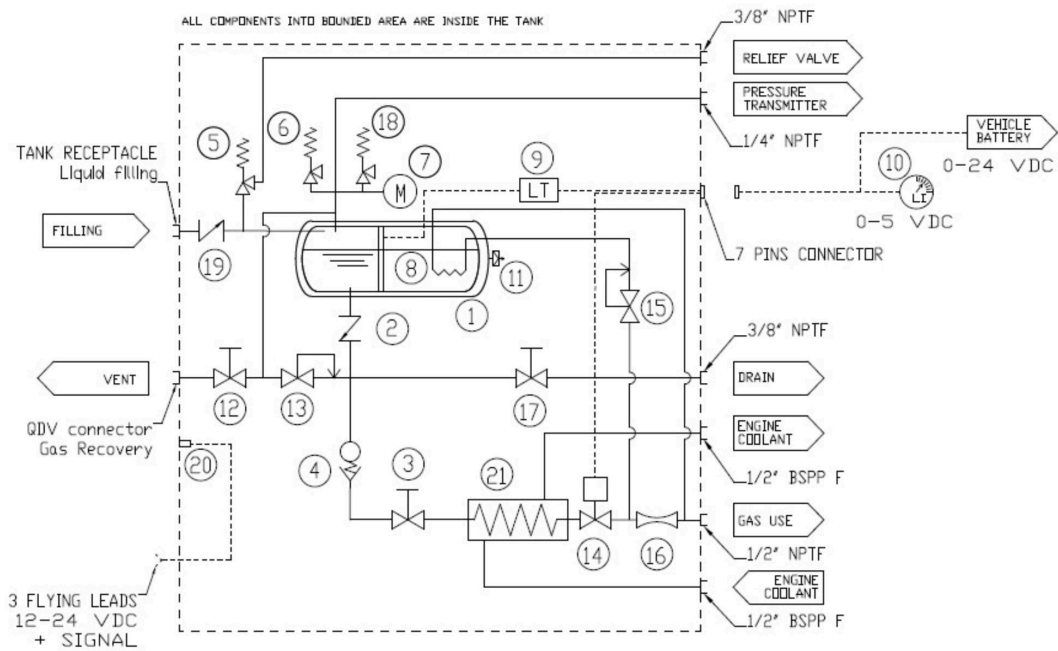
* weight when full is calculated using a density evaluated at 8 bar(g) saturation condition.

SERVICE & MAINTENANCE

ACS ensures a fast and complete service & maintenance thanks to a large spare parts stock in-house. All spare parts are also available for resale. ACS provides training courses for the use, maintenance and security of cryogenic vessels.

WARRANTY

ACS guarantees the vacuum seal for 2 years and offers a 1 years guarantee on mechanical parts provided that the tank has been used and maintained properly.



P&ID Dewar Mod. CHEETAH

ACS reserves the right to modify and improve any technical aspect without notice

DESCRIPTION

(FULL OPTION VERSION)

- (1) Cryogenic Tank
- (2) Cryogenic Check Valve
- (3) Liquid Line Manual Cryogenic Valve
- (4) Excess Flow Valve
- (5) Primary Safety Valve (16 Bar)
- (6) Secondary Safety Valve (21 Bar)
- (7) Pressure Gauge
- (8) Level Indicator Probe
- (9) Level Indicator Transmitter
- (10) Level Indicator Display
- (11) Vacuum Port
- (12) Manual Vent Valve
- (13) Economizer
- (14) Solenoid Valve
- (15) Pressure Building Line Pressure Regulator
- (16) Orifice
- (17) Manual Valve For Fast Defueling
- (18) Additional Safety Valve (24 Bar)
- (19) Filling Line Check Valve
- (20) Proximity Sensor
- (21) Integrated Heat Exchanger